

Live
The
FrenchWay
In LA



Bringing the Outside Inside



TRANSFORMATION

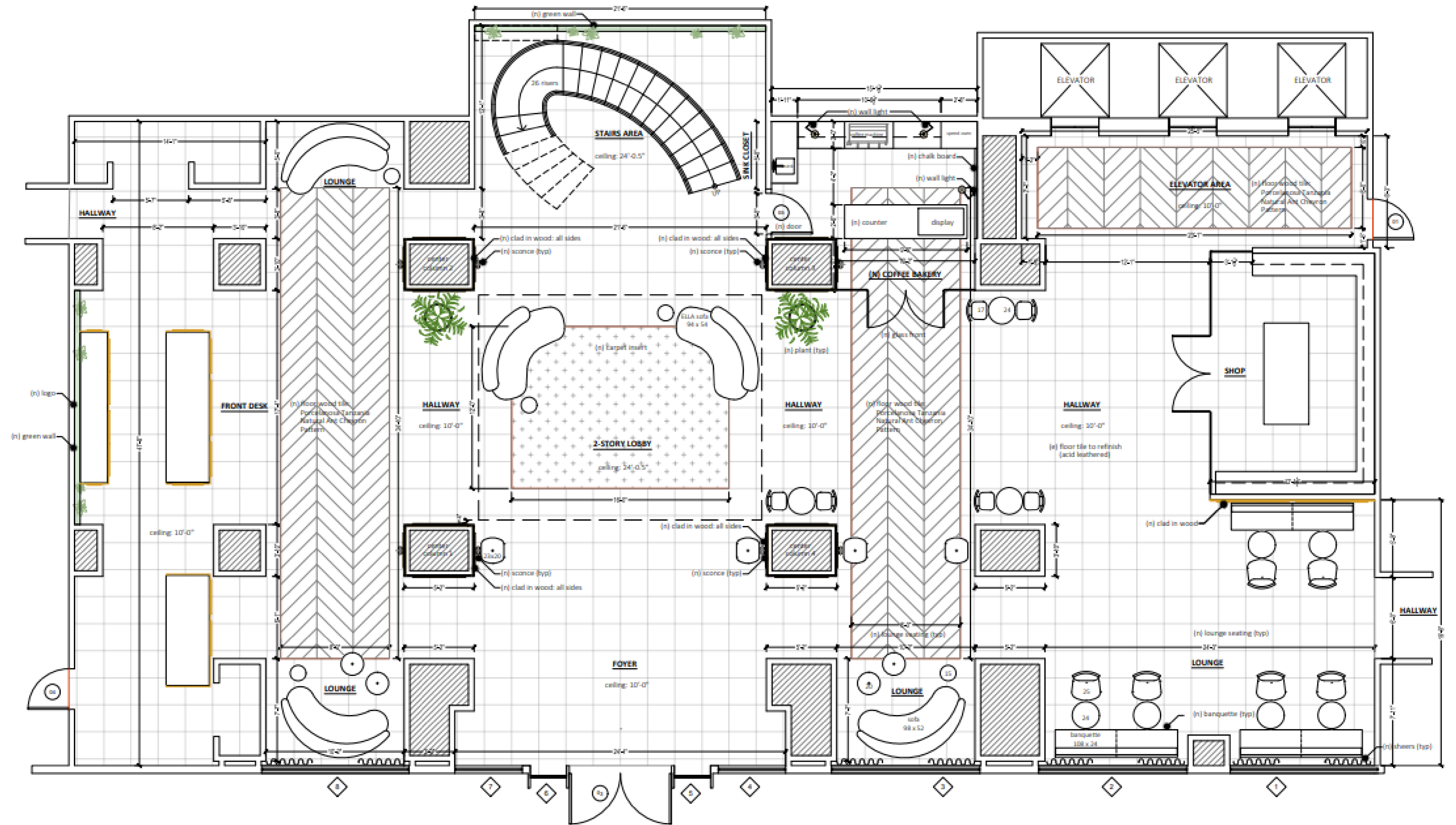
Establishing a connection to the outdoors begins even before entering the Hotel. Trailing vines cascade down from the exterior, softening the glass elements of the existing structure.

Upon entering, subtle cues add up to create a sense of invitation and set the tone for the experience. Natural materials and elevated details reflect classic Parisian architecture while remaining relaxed and welcoming.



SOFITEL

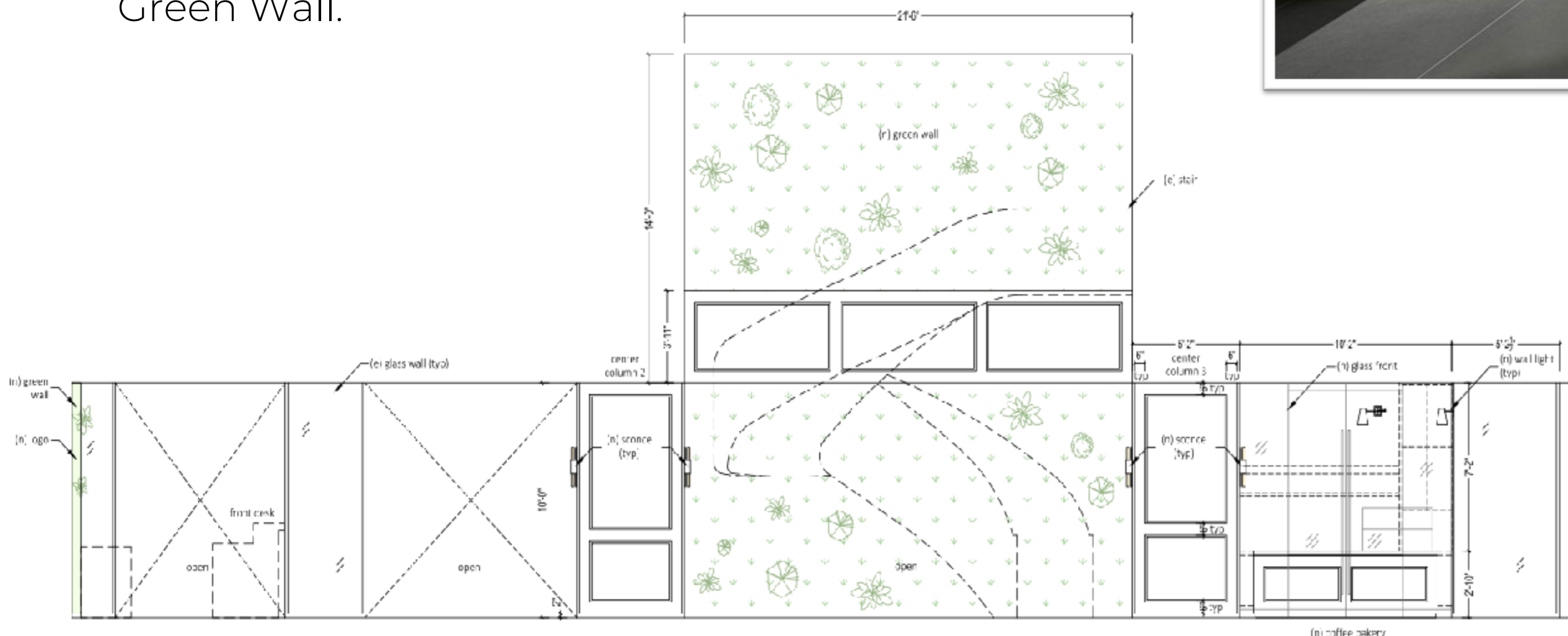
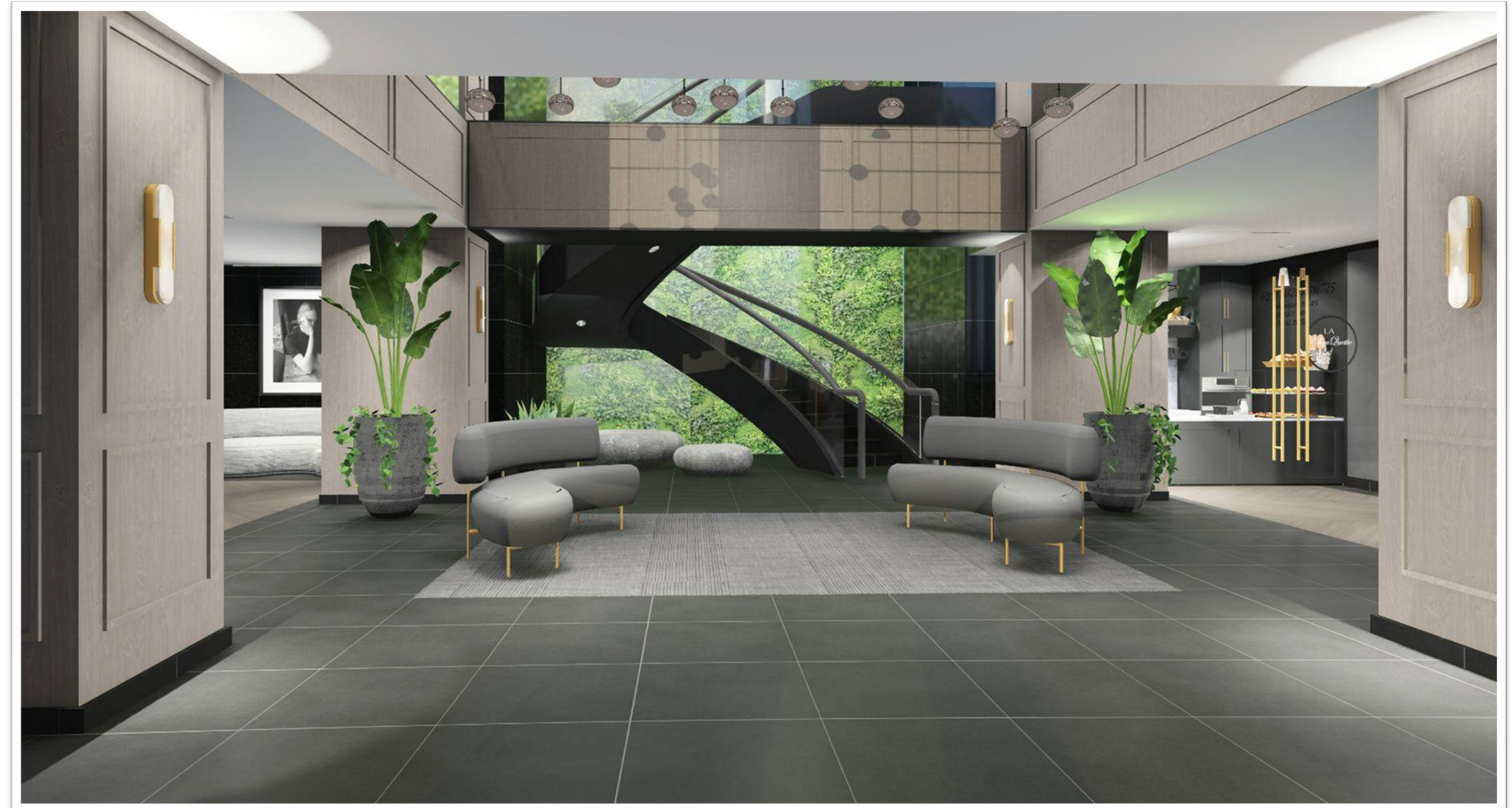
The Plan



First Impressions

BIENVENUE

By removing the imposing steel trellis and sculpture, we effectively open up the space to reveal the grand staircase and accentuate the high ceilings of the atrium. Cladding the central columns and facade of the second level adds architectural interest and infuses the space with the energy of wood, creating harmonious balance with the textural backdrop of the Green Wall.



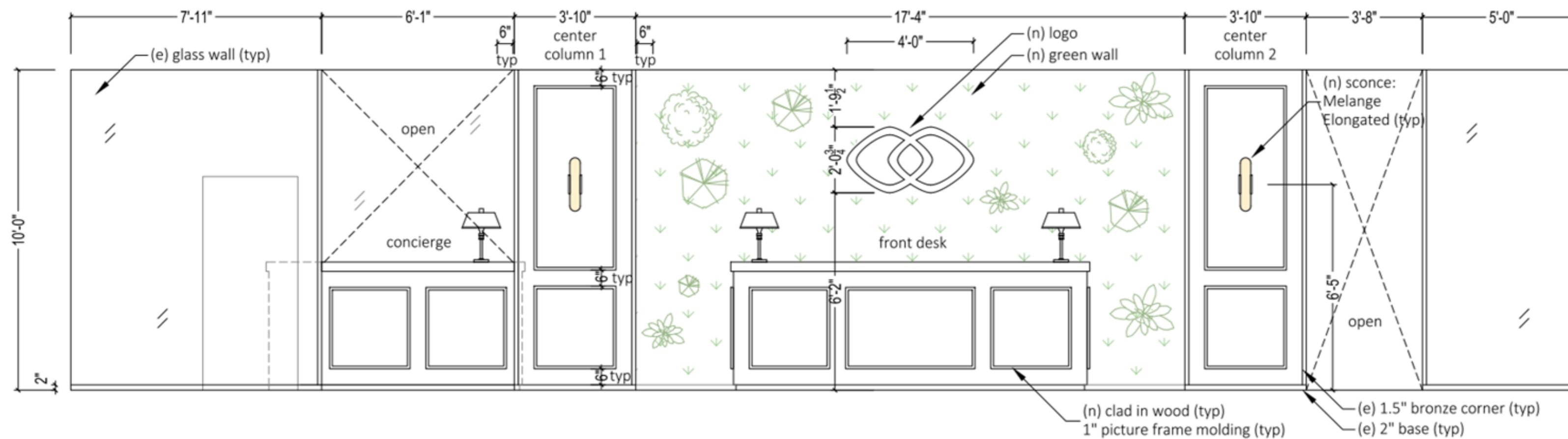
Softening the polished stone floor with a leather finish giving it a rich charcoal tone and texture. This grounds the muted taupe and stone colors, which animates the original dark, reflective surfaces and adds a gentle tonality.

The Arrival

RECEPTION

Creating a more open and welcoming reception area provides a cohesive initial experience for the guest.

Sleek and refined antique brass and hand-carved alabaster light fixtures flank the central wood columns, adding visual interest and warm ambient lighting throughout the Lobby.



Le Pâtisserie

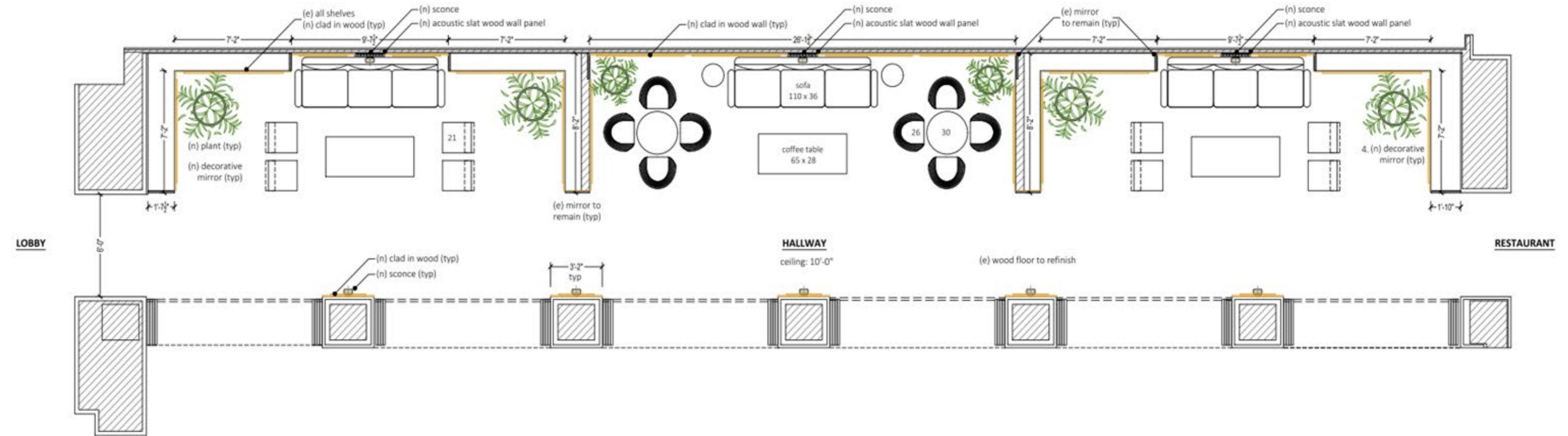
BON APPÉTIT

Parisian couple Elodie & Dan produce exquisite creations that have been successfully received in the Los Angeles Market since 2016. Every flavor is a celebration of expression and passion of the choux pastry.



Bringing a delicate balance of technique, aesthetic and taste, La Chouquette will be a welcome addition to the culinary experiences available to our guests.

The Lounge



CHILL

This long corridor becomes an inviting transitional space where guests can enjoy a morning coffee and pastry or take in the evening's entertainment.

Architectural gestures add classic flair and a refined elegance to the space. The natural wood elements provide symmetry, balance and a textural backdrop for the new wall sconces flanking the corridor.

Form & Function

SCULPTURAL ELEMENTS

Creating visual impact by using lighting and furniture as art, integrates a fresh, modern aesthetic with sculptural lines and soft curves.

A layered mix of materials and natural elements add drama and interest to common areas, showcasing new updated spaces.





THE SUITES

The Stay

ELEVATED CHIC



Custom furniture pieces designed for The Suites evoke a rich residential feel in these well-appointed rooms.

The elegant and muted scheme provides a perfect backdrop for our well curated and eclectic collection art and photography.

The hotel's collection of images are infused with new pieces from contemporary local and international artists, to showcase the rich cinematic history of Los Angeles, and add a fresh modern feel to compliment the design direction.

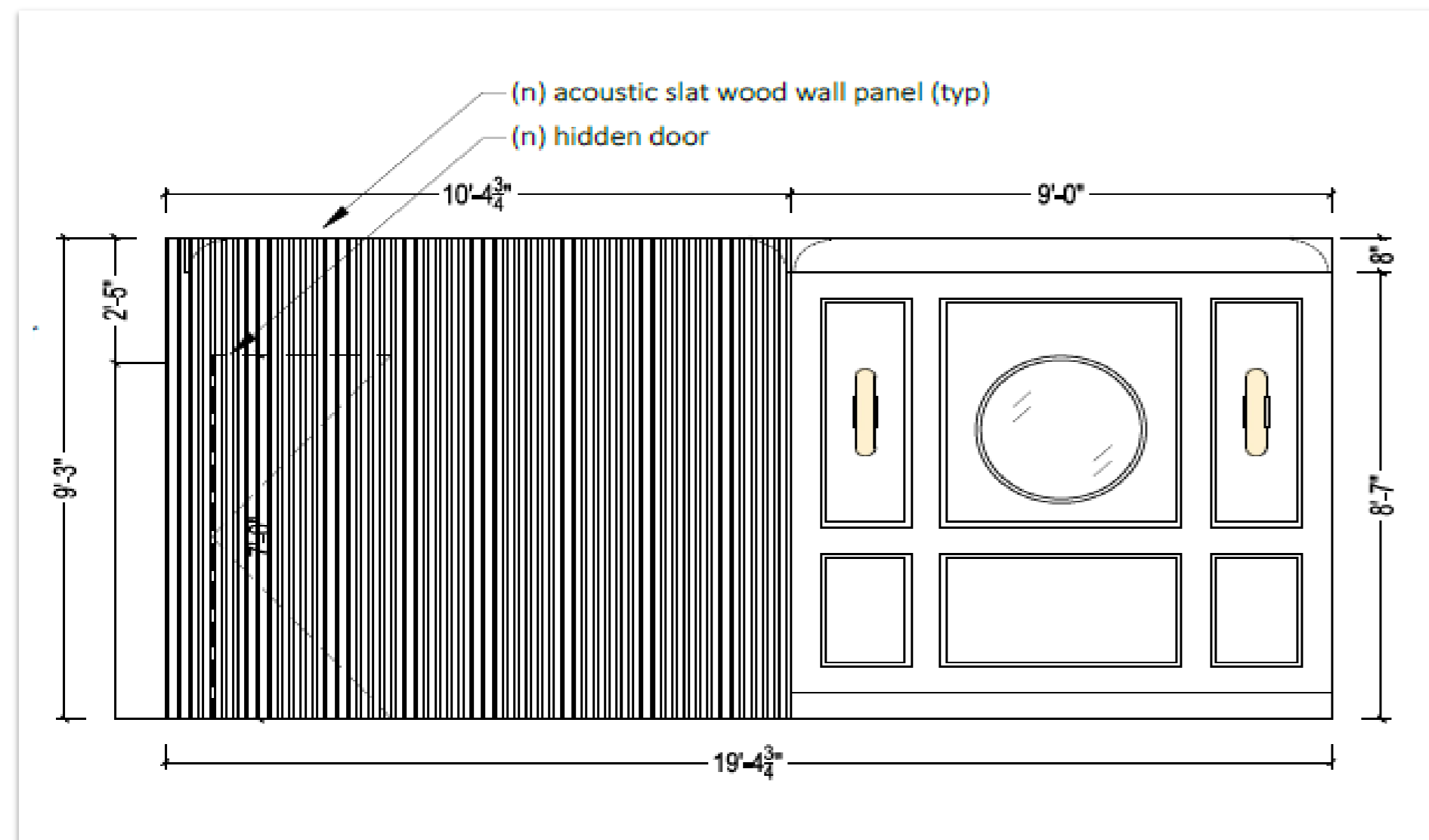
Adjoining Suites

CONNECTION

Modern design solutions provide seamless transitions between rooms without compromising privacy or aesthetics.



These seamless slatted wood panels will provide much needed acoustic value, as well as add a beautiful and functional way to conceal the adjoining door.

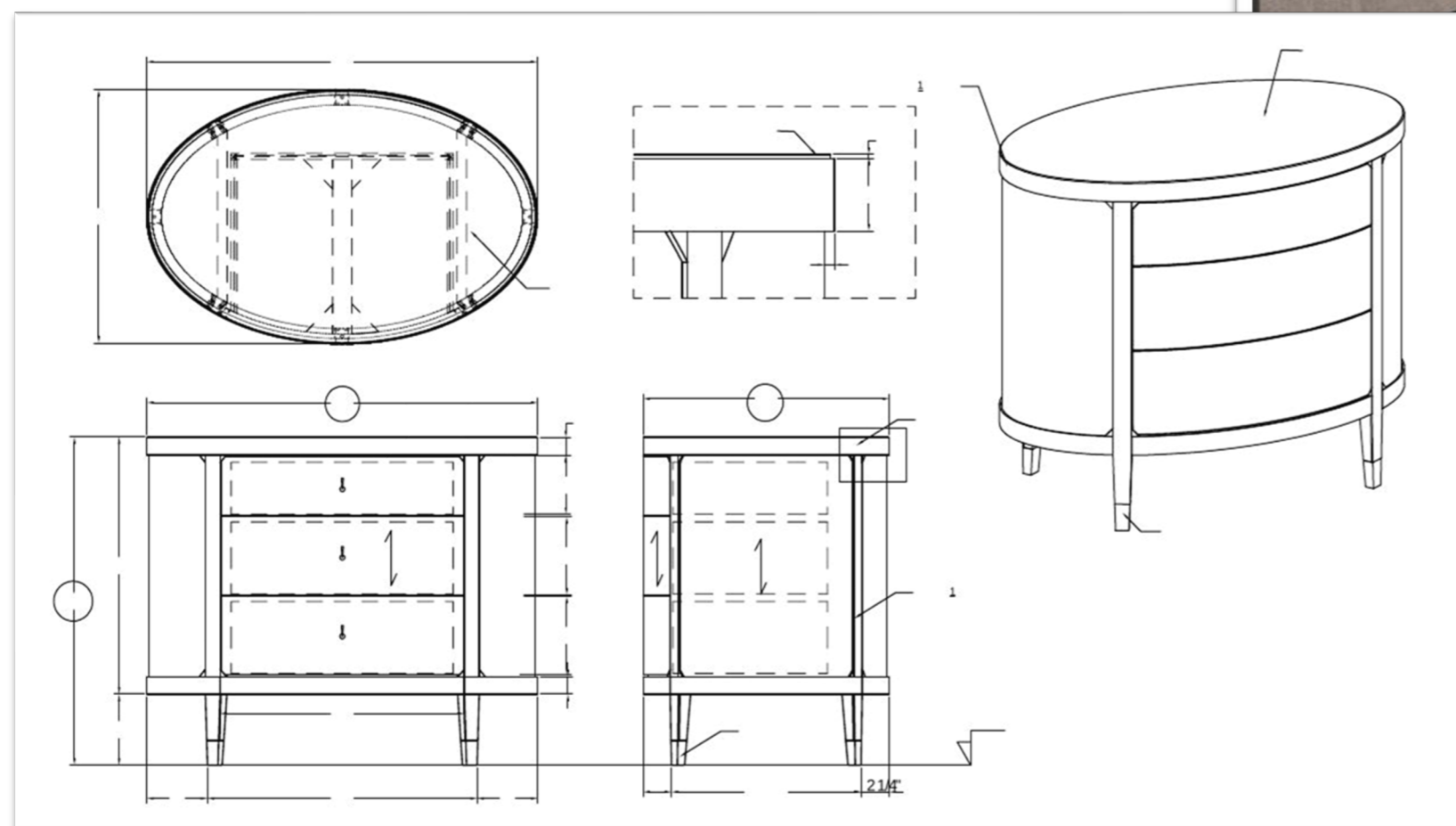


The Details

MADE TO ORDER

Custom designed and manufactured case goods and room furnishings boast high end hospitality grade construction, fabric and finishes.

Kiln dried hardwoods, soft closing glides, and built-in power/USB charging units in Nightstands and Mini Bar provide easy accessibility.



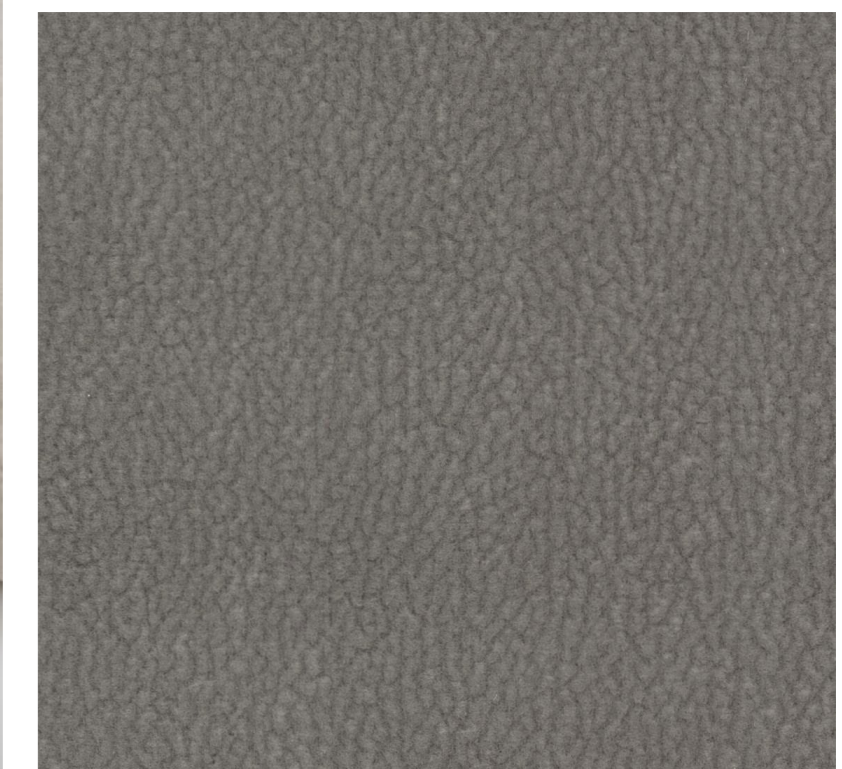
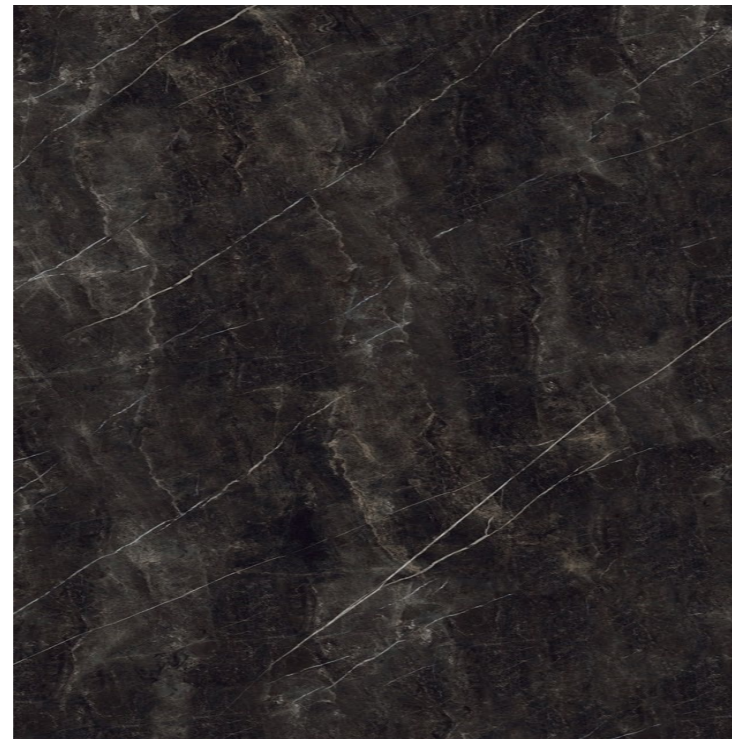
Queen and King Beds have been designed to accommodate the new standard Tempur + Sealy Elson mattresses.

The Materials

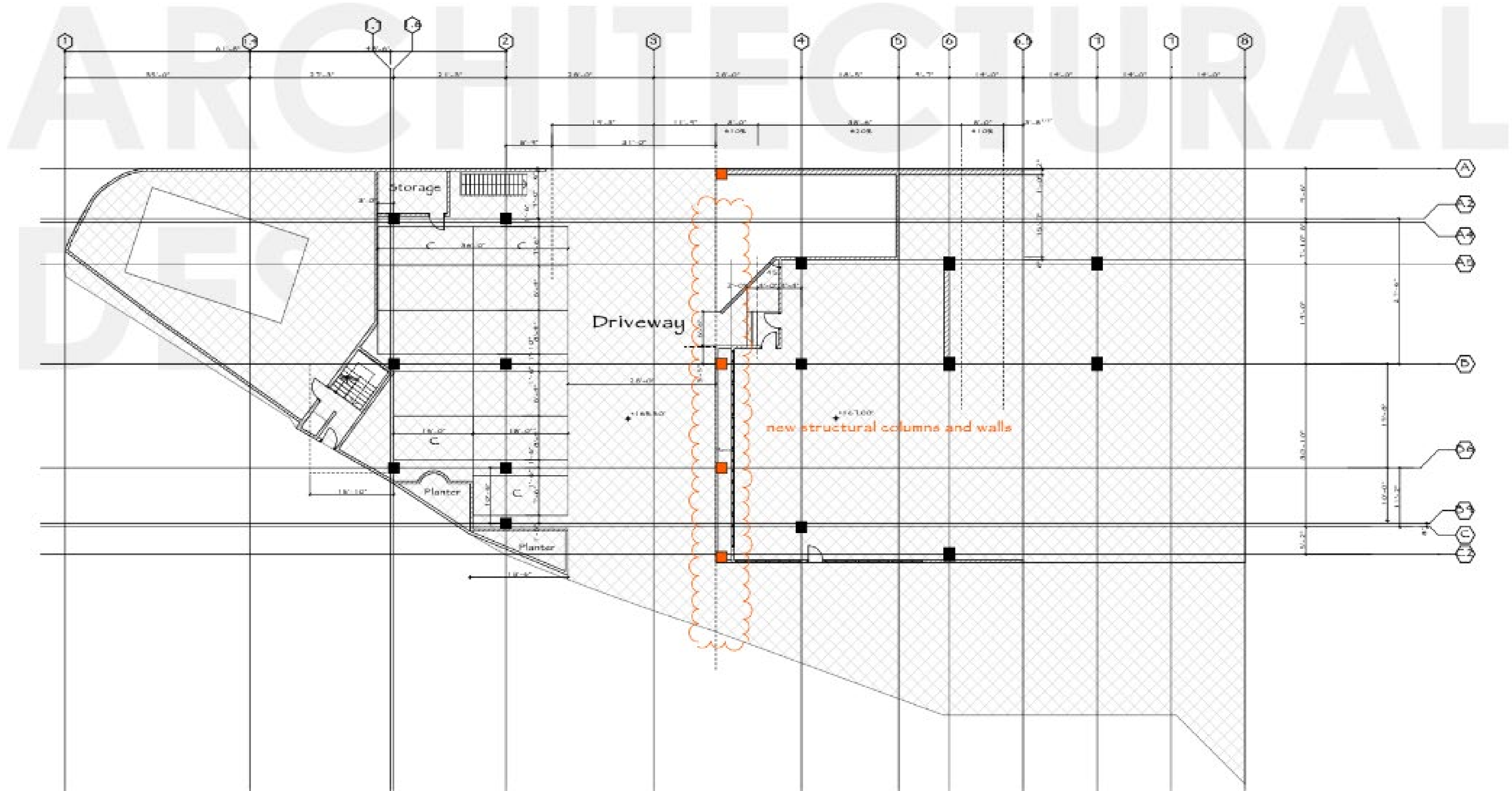
COMFORTABLE ELEGANCE

Upgraded suites, with architectural details and finishes, bring a classic Parisian look and feel that pairs well with a relaxed Southern California vibe.

Our new custom-made beds and furnishings marry natural elements (like wood, stone and innovative textile solutions) with sophisticated patterns to create a sense of modernity.



The Pool Plan

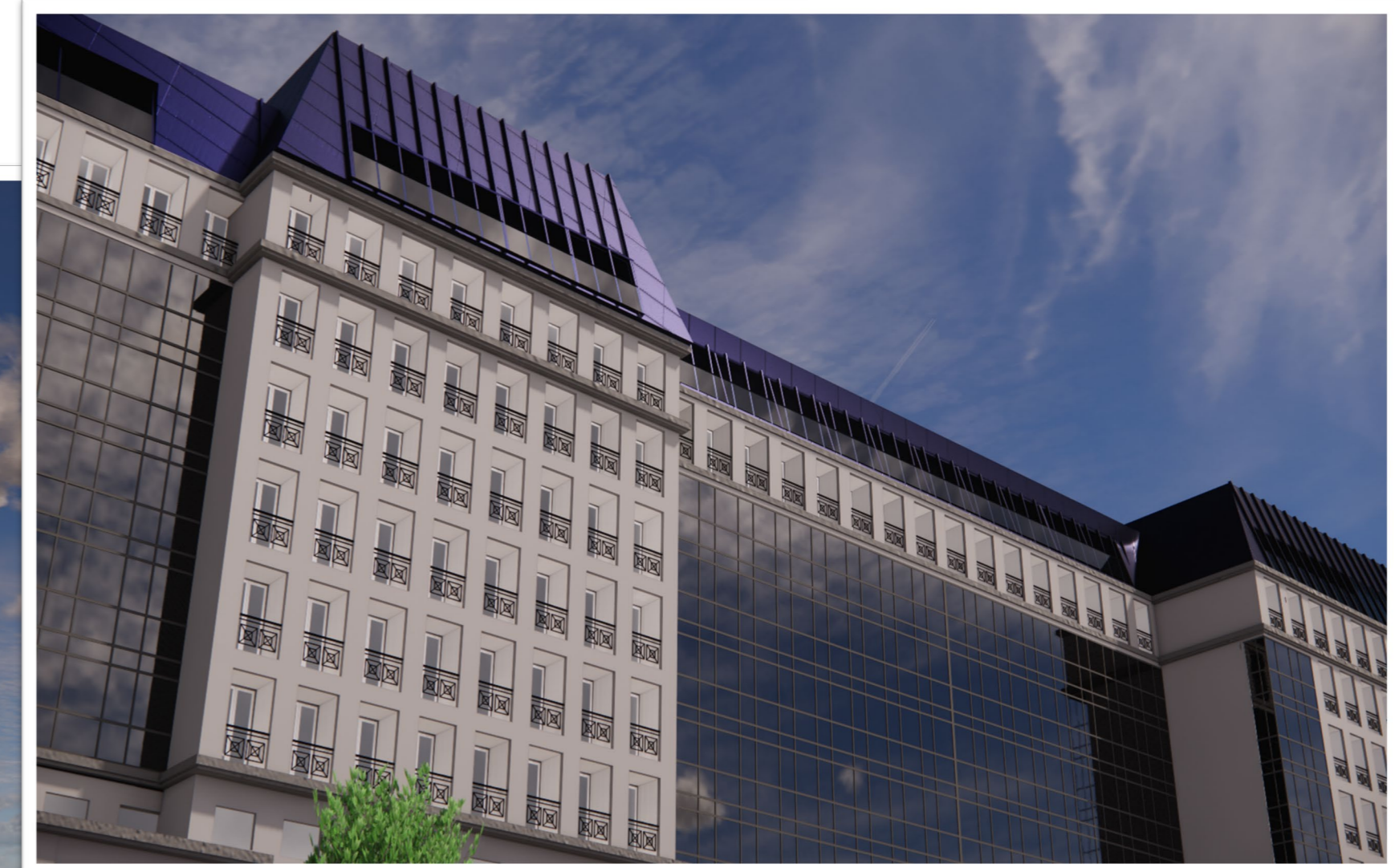


Exterior Projects



PORTE-COCHÈRE

Trailing vines cascade down from the exterior, softening the glass elements of the existing structure.



POOL DECK EXPANSION

Structural Engineering is in the works which will allow us to expand from the bridge towards Beverly, increasing the upper deck square footage approximately 1600 sq feet.

Giving the metal mansard roof a refreshing lift with the iconic French Blue brings the eternal allure of Parisian style to the LA Skyline.