

NETWORK ALMANAC

A CONVERSATION BETWEEN LOCAL GALLERISTS AND THE NEW STUDIO NEXTDOOR



CONVERSATION WORKING TITLE:
ART & INDUSTRY - A CONVERSATION ON
SHARED COMMUNITY

PURPOSE OF PROGRAMMING:



Artists and cultural workers are the lifeblood of New York's identity. Their presence shapes our neighborhoods and the ways our many subcultures interact.

New York City is experiencing a notable expansion of film and production studios. While this growth brings clear economic and cultural benefits, it also raises familiar concerns around neighborhood change and displacement.

As production companies and studios establish a larger footprint, we have an opportunity to rethink the collective narrative and foster reciprocal relationships between the creative institutions that draw people here and the industries that power the city's economy.

This conversation aims to create an open, constructive dialogue between those that already foster local artist communities and new local studio developments, exploring how collaboration can strengthen neighborhoods and create shared value.

CONVERSATION THEMES



Location: East End Studios

Opportunity: How can the presence of a major studio become a resource rather than a pressure point for local artists and galleries?

Mutual Benefit: In what ways do studios benefit from engaging authentically with the local creative community?

Models of Support: What does meaningful commitment to local arts look like across stakeholders, including galleries, artists, studios and city partners.

Shared Prosperity: How do we build frameworks for cross-sector collaboration that uplift independent creators and corporate enterprises alike, contributing to a culturally vibrant and economically inclusive city?

POSSIBLE PANEL GALLERIST SPEAKERS

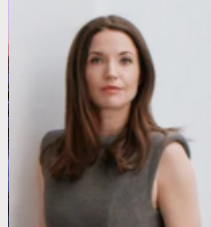


Stevenson Dunn Jr.

Gallerist

[The Bishop Gallery](#)

[@bishopgallery](#)



Martha Campbell

Gallerist

[Berry Campbell Gallery](#)

[@Berry_Campbell_Gallery](#)



Tanya Weddemire

Gallerist

[Tanya Weddemire Gallery](#)

[@tana Weddemire Gallery](#)



Richard Graves

Gallerist

[Richard Beavers Gallery](#)

[@richard Beavers Gallery](#)



Dr Janna Levin

[Founding Director of Sciences & Professor of Astrophysics\)](#)

[Pioneerworks / Columbia University](#)

EVENT DATE

The target date is November (before Thanksgiving) or January/February (After New Year and before Fashion takes over).

Unfortunately, the art calendar gets too full of holidays, galas, auctions and Art Basel to consider a December event for gallerists.



EVENT SIZE

This event is just an easy panel, so, it should be quite simple and any size audience is up to the studio.

However, the event scope may be scaled up or down from there:

- A small, invitation-only meeting between gallerists and the East End Studios development team.
- A community-facing ticketed salon-style event series.

EVENT TIMING

We are in Queens and this is just a talking head panel of gallerists, so the event should be an easy and chill after-work mixer on a Wednesday or Thursday which is a standard opening event night for the art crowd.

Either of these formats achieves the objective, which is connection, understanding, and future collaboration, but, of course, we think the original single event idea is the most fun, so this deck is crafted around that option.



POTENTIAL HOSTS (AVAILABILITY PERMITTING)



Lala Anthony
(TV Personality/Actress)



Jamie Hector
(TV/Film Actor)



Trevor Noah
(TV Personality/Comedian)



Neil DeGrasse Tyson
(TV Personality/ Scientist)

AUDIENCE ENGAGEMENT AND SOCIAL STRATEGY

ENTRY FEES

Community events should be free. Instead of a monetary ticket price, guests may support in other ways:

- **Subscriptions** - Guests can join/share to the Network Almanac newsletter, event calendar or social media accounts (instagram, tiktok, linkedin, substack).
- **Donate to a Cause** - Not a preferred option, but, based on timing, if this is November event, making an effort at adding a 'benefit' or 'fundraiser' aspect to address the damage from Hurricane Melissa might be indicated.

FOOD & BEVERAGE OPTIONS

We are always in favor of keeping an art/tour event simple with wine and simple passed hors d'oeuvres. However, there are other options.

- **Local vendors:** Take the opportunity to display local neighborhood vendors.
- **Possible Sponsors:** - Food/cocktail/spiritits vendors all over the city are known to sponsor creative events.



PRESS CONSIDERATIONS

Press is optional. If desired, we can facilitate select media outreach to support the Network Almanac launch and highlight East End Studios community engagement.

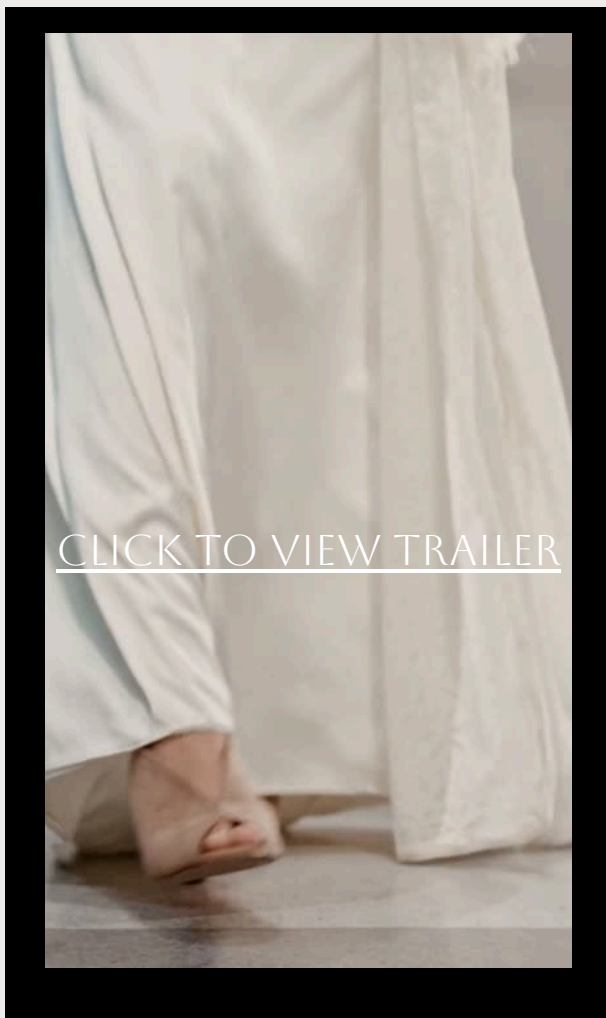
NEXT STEPS

- Agreement on event size/scope & participants.
- Studio refinement of event title and discussion topic.
- Space to hold the event.
- Studio commitment to direct discussion with gallerists.
- Space on the event panel for the Development Team.
- Negotiate access for audience to tour open spaces (if possible).



NETWORK ALMANAC

WHY PROPOSE THIS EVENT?



The Network Almanac cultural events calendar and newsletter will be launching in mid November 2025.

Community engagement like this underscores our mission to highlight various moments of opportunity to find that sweet-spot where culture, commerce, and creativity meet.

Sponsoring/organizing/introducing a community-centered conversation about cross-pollination between art and film moves our influence from online and into the real world.

Our platforms are under final construction at the moment, but, if required to move forward, a pre-launch preview can be arranged for the development team.



Pioneer Works

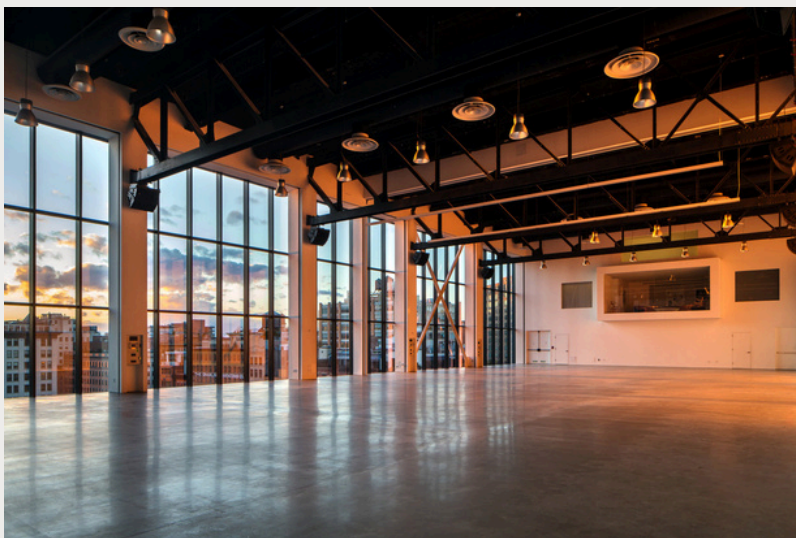


Kaufman Studios

ASSIMILATION AS LOCAL TRADITION

Welcome to Queens. We are proud to be the world's melting pot and a leader in celebrating and uplifting talent that is inspired by our unique ecosystem.

We invite you to join the NYC tradition of corporate institutions, commercial giants and industry leaders that prioritize engagement, support and integration with our iconic local arts spaces, cultural strongholds and creative communities.



Spring Studios



Payley Center